



INTEGRATED DISEASE SURVEILLANCE AND RESPONSE

Weekly Epidemiological Bulletin

(Week 31 of 2020 - Reporting period starting from (27th July 2020– 02nd August 2020)

1.0 Highlights of the week

- A total of 39 diarrheal disease consultations were recorded in the four sentinel sites.
- Seven (n=7) case of malnutrition was reported from the four sentinel sites; moderate acute malnutrition (n =6) and severe acute malnutrition (n =1).
- A total of seventeen perinatal deaths were recorded from the eighteen sites: three early neonatal deaths, eight fresh stillbirths and six macerated stillbirths.
- Four (n=4) confirmed malaria cases were reported through IDNS.
- There were zero maternal deaths reported through IDNS.
- A total of 568 confirmed COVID-19 cases were reported from the four regions

2.0 Diseases and conditions from sentinel sites

2.1 Diarrheal diseases for children under-five years

As shown in **Table 1**, a total of 39 consultations for diarrheal diseases were recorded from the four sentinel sites during Week 31. The most common type of diarrhea was acute gastroenteritis (87%). The distribution of the other types of diarrheal diseases was as follows; diarrhoea with severe dehydration =3%, diarrhoea with some dehydration = 8%, dysentery = 3% and persistent diarrhea = 0%. Majority of these cases were from Raleigh Fitkin Memorial Hospital (64%). A trend of these cases is seen in **Fig. 1** below.

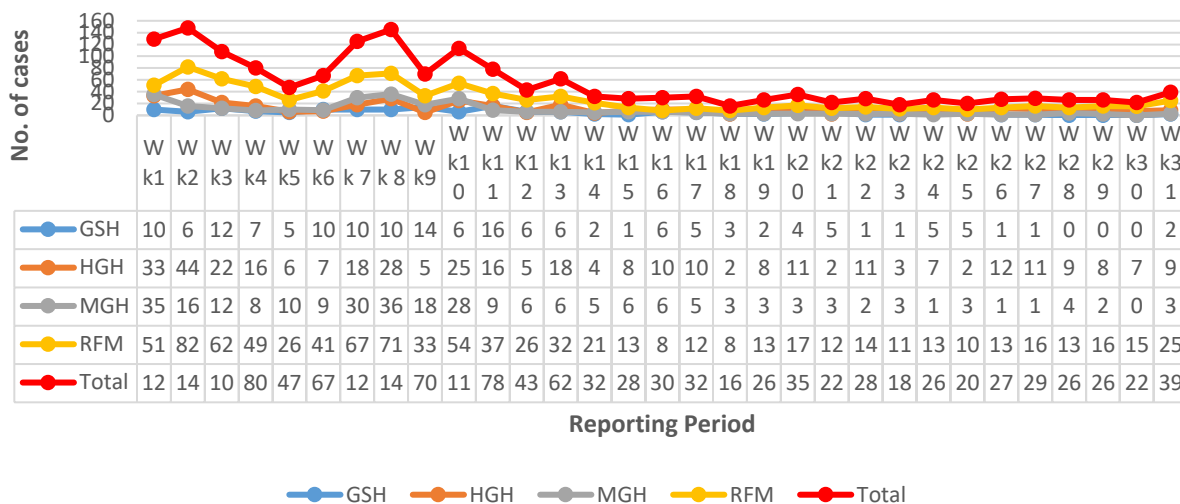
Table 1: Distribution of Diarrheal Diseases in the Four Sentinel Sites, Week 31 of 2020

| Type of Diarrhea | Sentinel site n (%) | | | | Total n (%) |
|----------------------------------|---------------------|---------------|--------------|----------------|-----------------|
| | GSH | HGH | MGH | RFM | |
| Acute gastroenteritis | 2 | 8 (24) | 2 (6) | 22 (65) | 34 (87) |
| Diarrhea with severe dehydration | 0 | 0 | 0 | 1 (100) | 1 (3) |
| Diarrhea with some dehydration | 0 | 0 | 1 (33) | 2 (67) | 3 (8) |
| Dysentery | 0 | 1 (100) | 0 | 0 | 1 (3) |
| Persistent diarrhea | 0 | 0 | 0 | 0 | 0 |
| Grand total | 2 (5) | 9 (23) | 3 (8) | 25 (64) | 39 (100) |





Fig 1: Diarrheal Diseases by Facility, Week 1-31 of 2020



2.2 Nutritional Deficiencies

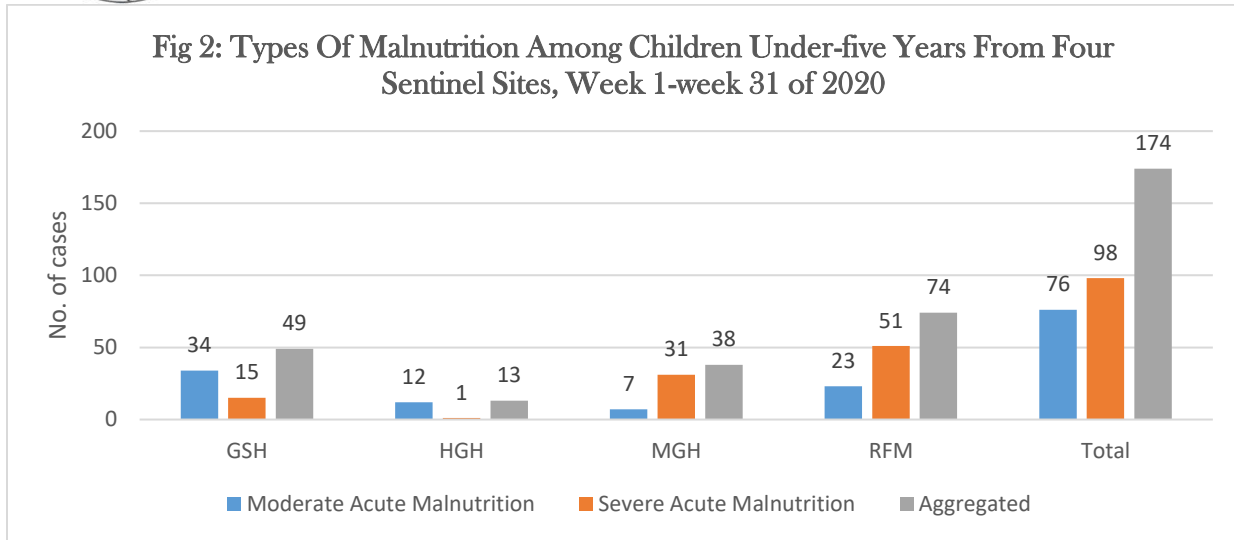
Table 2 shows the distribution of two types of under-fives' nutritional deficiencies reported from the four sentinel sites during week 31 of 2020. A total of 7 cases of malnutrition were reported from the four sentinel sites.

Table 2: Distribution of Nutritional Deficiencies in the Four Sentinel Sites During Epidemiologic Week 31 of 2020

| Nutritional Deficiency | Sentinel site | | | | Total |
|-----------------------------|---------------|----------|----------|----------|----------|
| | GSH | HGH | MGH | RFM | |
| Moderate Acute Malnutrition | 3 | 1 | 1 | 1 | 6 |
| Severe Acute Malnutrition | 1 | 0 | 0 | 0 | 1 |
| Grand total | 4 | 1 | 1 | 1 | 7 |

Fig 2 shows the types and number of nutritional deficiencies that have been observed in the four sentinel sites. A total of 174 nutritional deficiencies have been recorded since week 1 of 2020 and the distribution of aggregate malnutrition in the four sentinel sites was as follows; GSH = 49, HGH = 13, MGH = 38, and RFM = 74.





3.0 Maternal and Perinatal Deaths Surveillance

3.1 Perinatal Mortality

Fig. 1 shows the number of births by facility during week 31 of 2020. A total of 573 births were recorded in 18 health facilities providing maternity services (including private-owned, government-owned and mission-owned health facilities). Raleigh Fitkin Memorial Hospital had the highest number of births (n=125).

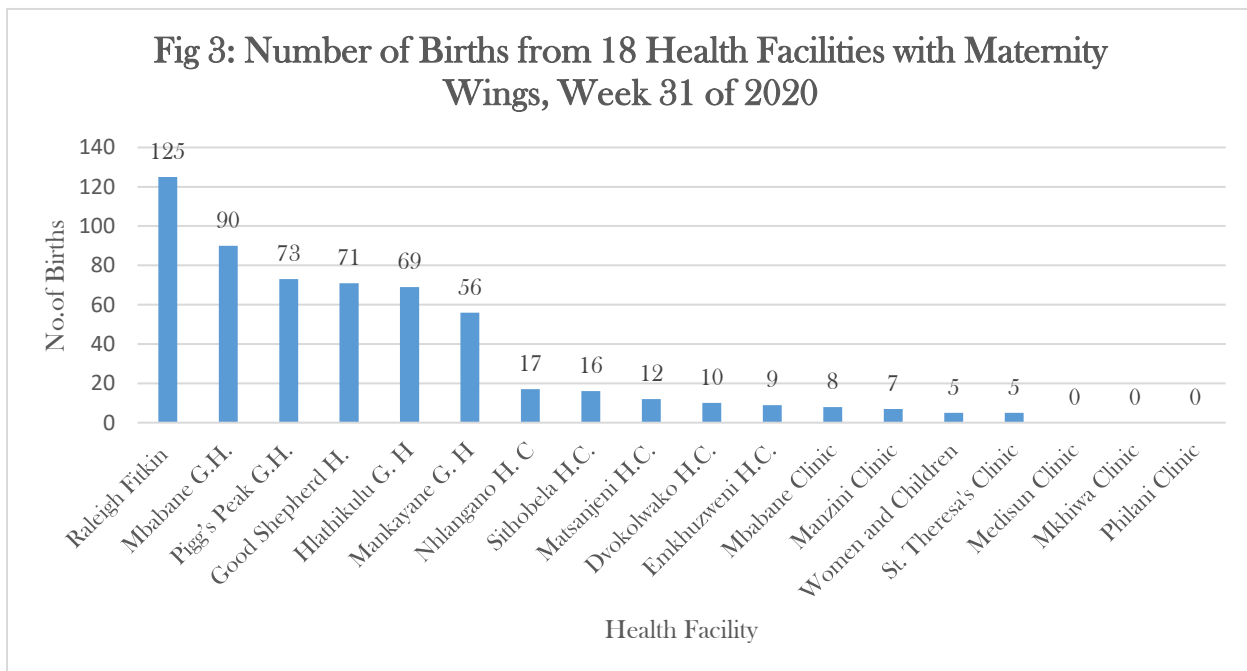




Table 3: Perinatal Deaths Reported from Eighteen Health Facilities Providing Maternity Services, Week 31 of 2020.

| Health Facility | Type of Perinatal Death | | | Total | Cumulative |
|--------------------------|-------------------------|----------|----------|-----------|------------|
| | END | FSB | MSB | | |
| Hhohho Region | | | | | |
| Dvokolwako H.C. | 0 | 0 | 0 | 0 | 3 |
| Emkhuzweni H.C. | 0 | 0 | 0 | 0 | 8 |
| Mbabane Clinic | 0 | 0 | 0 | 0 | 0 |
| Mbabane G.H. | 1 | 0 | 0 | 1 | 116 |
| Medisun Clinic | 0 | 0 | 0 | 0 | 0 |
| Pigg's Peak G.H. | 0 | 0 | 1 | 1 | 48 |
| Lubombo Region | | | | | |
| Good Shepherd H. | 0 | 1 | 0 | 1 | 32 |
| Sithobela H.C. | 0 | 0 | 0 | 0 | 9 |
| Shiselweni Region | | | | | |
| Hlathikhulu G.H. | 0 | 1 | 2 | 3 | 70 |
| Matsanjani H.C. | 0 | 0 | 0 | 0 | 8 |
| Nhlangano H.C. | 0 | 0 | 0 | 0 | 5 |
| Manzini Region | | | | | |
| Mankayane G.H. | 0 | 1 | 1 | 2 | 32 |
| Manzini Clinic | 0 | 0 | 0 | 0 | 2 |
| Mkhiwa Clinic | 0 | 0 | 0 | 0 | 1 |
| Philani Clinic | 0 | 0 | 0 | 0 | 2 |
| Raleigh Fitkin | 2 | 5 | 2 | 9 | 114 |
| St. Theresa's Clinic | 0 | 0 | 0 | 0 | 0 |
| Women & Children | 0 | 0 | 0 | 0 | 2 |
| Grand Total | 3 | 8 | 6 | 17 | 452 |





Table 3 shows the number and type of perinatal deaths during week 31 and cumulative number of perinatal deaths since week 1 of 2020. A total of 17 perinatal deaths were recorded from 18 health facilities; early neonatal deaths (n=3), fresh stillbirths (n=8) and macerated stillbirths (n=6). There was a total of 452 perinatal deaths since week 1 of 2020.

3.2 Maternal Mortality

There was one maternal death reported through active surveillance during week 31.

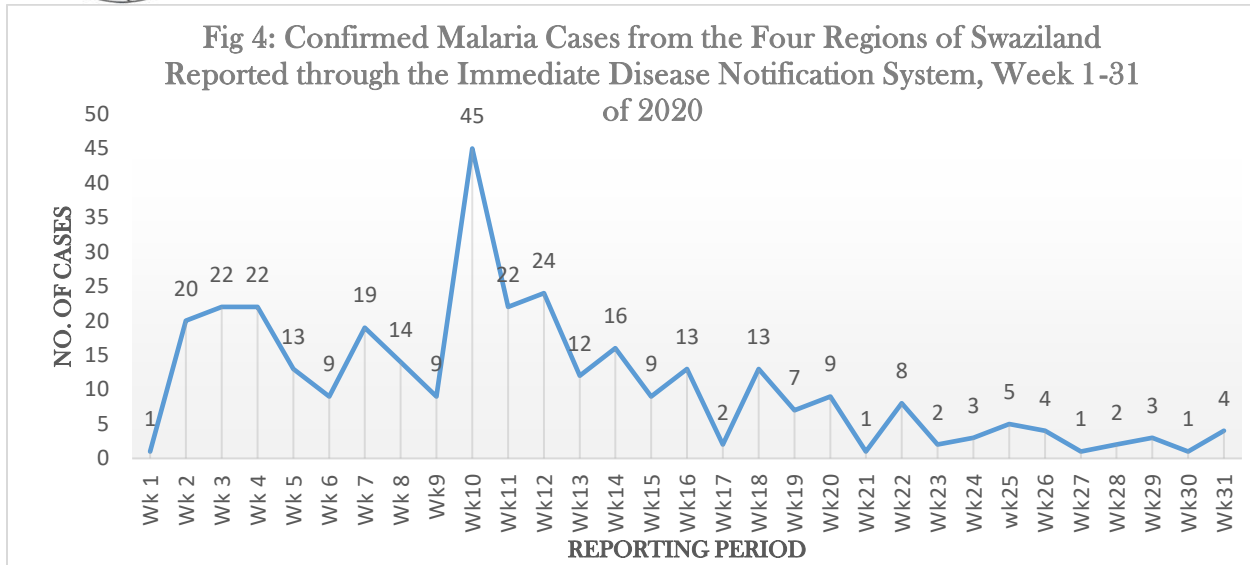
4.0 Other diseases and conditions reported through IDNS

During week 31, four (n=4) cases of confirmed malaria were reported through IDNS, from the Hhohho region (n=1), Lubombo region (n=3), Manzini region (n=0) and Shiselweni region (n=0). Four (n=4) perinatal deaths were reported through IDNS from the Hhohho region (n=1), Lubombo region (n=0), Manzini region (n=2) and Shiselweni region (n=1). There were three (n=3) maternal deaths reported through IDNS in week 31 of 2020 (**Table 4**).

Table 4: Distribution of notifiable diseases between week 28 to week 31 of 2020 (IDNS data)

| Notifiable Disease | Week 28 (05 to 12 July) | | | | | Week 29 (13 to 19 July) | | | | | Week 30 (20 to 26 July) | | | | | Week 31 (27 July to 02 August) | | | | |
|------------------------------------|----------------------------|-----------|------------|------------|------------|----------------------------|-----------|------------|------------|------------|----------------------------|-----------|------------|------------|------------|-----------------------------------|-----------|------------|------------|------------|
| | Hhohho | Lubombo | Manzini | Shiselweni | Total | Hhohho | Lubombo | Manzini | Shiselweni | Total | Hhohho | Lubombo | Manzini | Shiselweni | Total | Hhohho | Lubombo | Manzini | Shiselweni | Total |
| Malaria(Confirmed) | 1 | 0 | 0 | 0 | 1 | 1 | 1 | 1 | 0 | 3 | 1 | 0 | 0 | 0 | 1 | 1 | 3 | 0 | 0 | 4 |
| Maternal Death | 1 | 0 | 0 | 0 | 1 | 0 | 0 | 0 | 2 | 2 | 0 | 0 | 0 | 0 | 0 | 2 | 0 | 1 | 0 | 3 |
| Suspected Cholera | 0 | 0 | 0 | 0 | 0 | 0 | 0 | 0 | 0 | 0 | 0 | 0 | 0 | 0 | 0 | 0 | 0 | 0 | 0 | 0 |
| Suspected Measles | 0 | 0 | 0 | 0 | 0 | 0 | 0 | 0 | 0 | 0 | 0 | 0 | 0 | 0 | 0 | 0 | 0 | 1 | 0 | 1 |
| Suspected Severe Food Poisoning | 0 | 0 | 0 | 0 | 0 | 0 | 0 | 0 | 0 | 0 | 0 | 0 | 0 | 0 | 0 | 0 | 0 | 0 | 0 | 0 |
| Viral Hemorrhagic Fever/Ebola | 0 | 0 | 0 | 0 | 0 | 0 | 0 | 0 | 0 | 0 | 0 | 0 | 0 | 0 | 0 | 0 | 0 | 0 | 0 | 0 |
| Acute Flaccid Paralysis | 0 | 0 | 0 | 1 | 1 | 0 | 0 | 0 | 1 | 1 | 0 | 1 | 0 | 0 | 1 | 0 | 0 | 0 | 0 | 0 |
| Neonatal Tetanus | 0 | 0 | 0 | 0 | 0 | 0 | 0 | 0 | 0 | 0 | 0 | 0 | 0 | 0 | 0 | 0 | 0 | 0 | 0 | 0 |
| Suspected Human Rabies | 0 | 0 | 0 | 0 | 0 | 0 | 0 | 0 | 0 | 0 | 0 | 0 | 0 | 0 | 0 | 0 | 0 | 0 | 0 | 0 |
| COVID-19 (Confirmed) | 59 | 18 | 104 | 15 | 196 | 225 | 22 | 192 | 22 | 461 | 213 | 10 | 165 | 24 | 412 | 278 | 50 | 202 | 37 | 567 |
| Suspected Typhoid Fever | 0 | 0 | 0 | 0 | 0 | 0 | 0 | 0 | 0 | 0 | 0 | 0 | 0 | 0 | 0 | 0 | 0 | 0 | 0 | 0 |
| Suspected Meningococcal Meningitis | 0 | 0 | 0 | 0 | 0 | 0 | 0 | 0 | 0 | 0 | 0 | 0 | 0 | 0 | 0 | 0 | 0 | 0 | 0 | 0 |
| Perinatal Death | 2 | 0 | 1 | 1 | 4 | 0 | 0 | 0 | 1 | 1 | 2 | 0 | 0 | 2 | 4 | 1 | 0 | 2 | 1 | 4 |
| Suspected Yellow Fever | 0 | 0 | 0 | 0 | 0 | 0 | 0 | 0 | 0 | 0 | 0 | 0 | 0 | 0 | 0 | 0 | 0 | 0 | 0 | 0 |
| Suspected Rift Valley Fever | 0 | 0 | 0 | 0 | 0 | 0 | 0 | 0 | 0 | 0 | 0 | 0 | 0 | 0 | 0 | 0 | 0 | 0 | 0 | 0 |
| Total | 63 | 18 | 105 | 17 | 203 | 226 | 23 | 193 | 26 | 468 | 216 | 11 | 165 | 26 | 418 | 282 | 53 | 206 | 38 | 579 |





5.0 Confirmed COVID-19 Cases from the four Regions

Fig 5 below shows the total number of confirmed COVID-19 cases reported from the four regions during week 31. Hhohho had the highest number of confirmed COVID-19 cases (n=261). The trend of these cases is shown in Fig 5 below,

