



INTEGRATED DISEASE SURVEILLANCE AND RESPONSE

Weekly Epidemiological Bulletin

(Week 33 of 2020 - Reporting period starting from (10th- 16th August 2020)

1.0 Highlights of the week

- A total of 41 diarrheal disease consultations were recorded in the four sentinel sites.
- Five (n=5) case of malnutrition was reported from the four sentinel sites; moderate acute malnutrition (n =3) and severe acute malnutrition (n =2).
- A total of fifteen perinatal deaths were recorded from the eighteen sites: two early neonatal deaths, two fresh stillbirths and eleven macerated stillbirths.
- Three (n=3) confirmed malaria case was reported through IDNS.
- There were zero maternal death reported through IDNS.
- A total of 603 confirmed COVID-19 cases were reported from the four regions.

2.0 Diseases and conditions from sentinel sites

2.1 Diarrheal diseases for children under-five years

As shown in **Table 1**, a total of 41 consultations for diarrheal diseases were recorded from the four sentinel sites during Week 33. The most common type of diarrhea was acute gastroenteritis (83%). The distribution of the other types of diarrheal diseases was as follows; diarrhoea with severe dehydration =2%, diarrhoea with some dehydration = 5%, dysentery = 7% and persistent diarrhea = 2%. Majority of these cases were from Raleigh Fitkin Memorial Hospital (51%). A trend of these cases is seen in **Fig. 1** below.

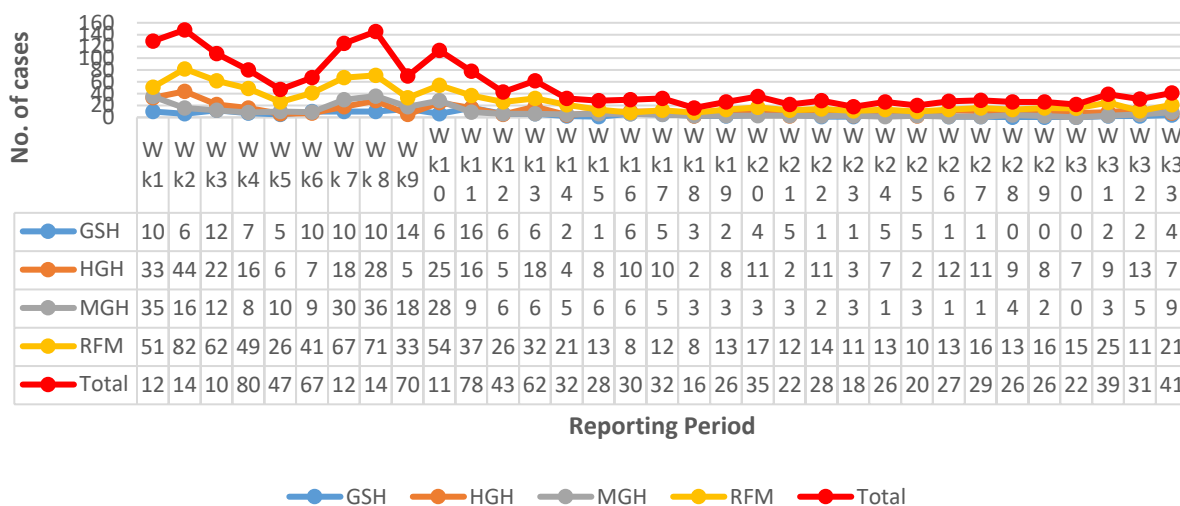
Table 1: Distribution of Diarrheal Diseases in the Four Sentinel Sites, Week 33 of 2020

Type of Diarrhea	Sentinel site n (%)				Total n (%)
	GSH	HGH	MGH	RFM	
Acute gastroenteritis	3 (9)	7 (21)	5 (15)	19 (56)	34 (83)
Diarrhea with severe dehydration	0	0	1 (100)	0	1 (2)
Diarrhea with some dehydration	1 (50)	0	0	1 (50)	2 (5)
Dysentery	0	0	2 (67)	1 (33)	3 (7)
Persistent diarrhea	0	0	1 (100)	0	1 (2)
Grand total	4 (10)	7 (17)	9 (22)	21 (51)	41 (100)





Fig 1: Diarrheal Diseases by Facility, Week 1-33 of 2020



2.2 Nutritional Deficiencies

Table 2 shows the distribution of two types of under-fives’ nutritional deficiencies reported from the four sentinel sites during week 33 of 2020. A total of 5 cases of malnutrition were reported from the four sentinel sites.

Table 2: Distribution of Nutritional Deficiencies in the Four Sentinel Sites During Epidemiologic Week 33 of 2020

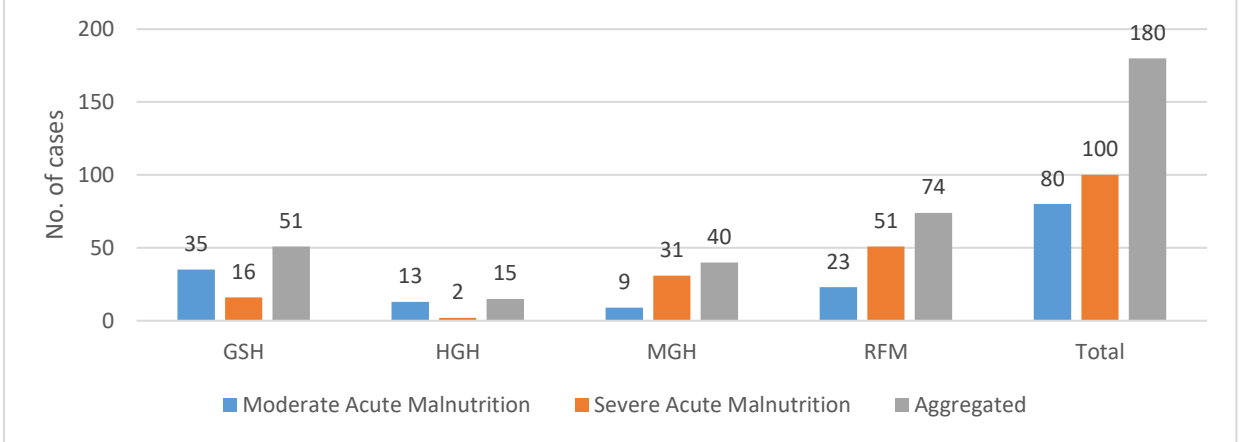
Nutritional Deficiency	Sentinel site				Total
	GSH	HGH	MGH	RFM	
Moderate Acute Malnutrition	1	1	1	0	3
Severe Acute Malnutrition	1	1	0	0	2
Grand total	2	2	1	0	5

Fig 2 shows the types and number of nutritional deficiencies that have been observed in the four sentinel sites. A total of 180 nutritional deficiencies have been recorded since week 1 of 2020 and the distribution of aggregate malnutrition in the four sentinel sites was as follows; GSH = 51, HGH = 15, MGH = 40, and RFM = 74.





Fig 2: Types Of Malnutrition Among Children Under-five Years From Four Sentinel Sites, Week 1-week 33 of 2020



3.0 Maternal and Perinatal Deaths Surveillance

3.1 Perinatal Mortality

Fig. 1 shows the number of births by facility during week 33 of 2020. A total of 559 births were recorded in 18 health facilities providing maternity services (including private-owned, government-owned and mission-owned health facilities). Mbabane Government Hospital had the highest number of births (n=111).

Fig 3: Number of Births from 18 Health Facilities with Maternity Wings, Week 33 of 2020

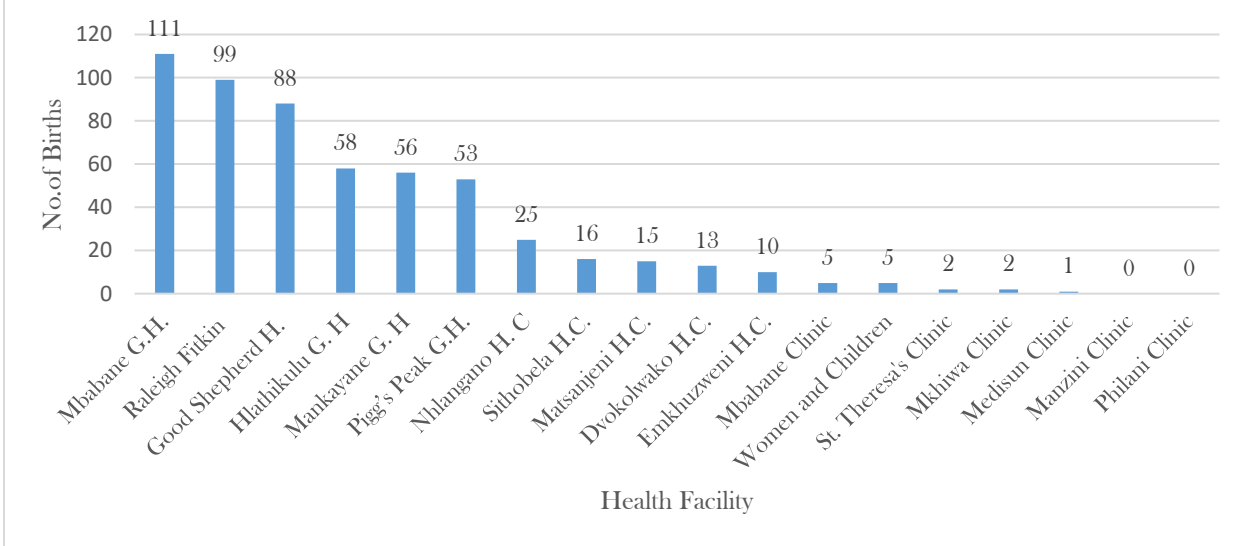




Table 3: Perinatal Deaths Reported from Eighteen Health Facilities Providing Maternity Services, Week 33 of 2020.

Health Facility	Type of Perinatal Death			Total	Cumulative
	END	FSB	MSB		
Hhohho Region					
Dvokolwako H.C.	0	0	0	0	3
Emkhuzweni H.C.	0	0	0	0	8
Mbabane Clinic	0	0	0	0	0
Mbabane G.H.	1	1	5	7	129
Medisun Clinic	0	0	0	0	0
Pigg's Peak G.H.	0	0	1	1	53
Lubombo Region					
Good Shepherd H.	1	0	1	2	36
Sithobela H.C.	0	0	2	2	11
Shiselweni Region					
Hlathikhulu G.H.	0	1	0	1	72
Matsanjani H.C.	0	0	0	0	8
Nhlangano H.C.	0	0	0	0	5
Manzini Region					
Mankayane G.H.	0	0	0	0	33
Manzini Clinic	0	0	0	0	2
Mkhiwa Clinic	0	0	0	0	1
Philani Clinic	0	0	0	0	2
Raleigh Fitkin	0	0	2	2	118
St. Theresa's Clinic	0	0	0	0	0
Women & Children	0	0	0	0	2
Grand Total	2	2	11	15	483





Table 3 shows the number and type of perinatal deaths during week 33 and cumulative number of perinatal deaths since week 1 of 2020. A total of 15 perinatal deaths were recorded from 18 health facilities; early neonatal deaths (n=2), fresh stillbirths (n=2) and macerated stillbirths (n=11). There was a total of 483 perinatal deaths since week 1 of 2020.

3.2 Maternal Mortality

There was zero maternal death reported through active surveillance during week 33.

4.0 Other diseases and conditions reported through IDNS

During week 33, three (n=3) case of confirmed malaria was reported through IDNS, from the Hhohho region (n=0), Lubombo region (n=1), Manzini region (n=1) and Shiselweni region (n=1). Five (n=5) perinatal deaths were reported through IDNS from the Hhohho region (n=3), Lubombo region (n=1), Manzini region (n=0) and Shiselweni region (n=1). There was zero (n=0) maternal death reported through IDNS in week 33 of 2020 (**Table 4**).

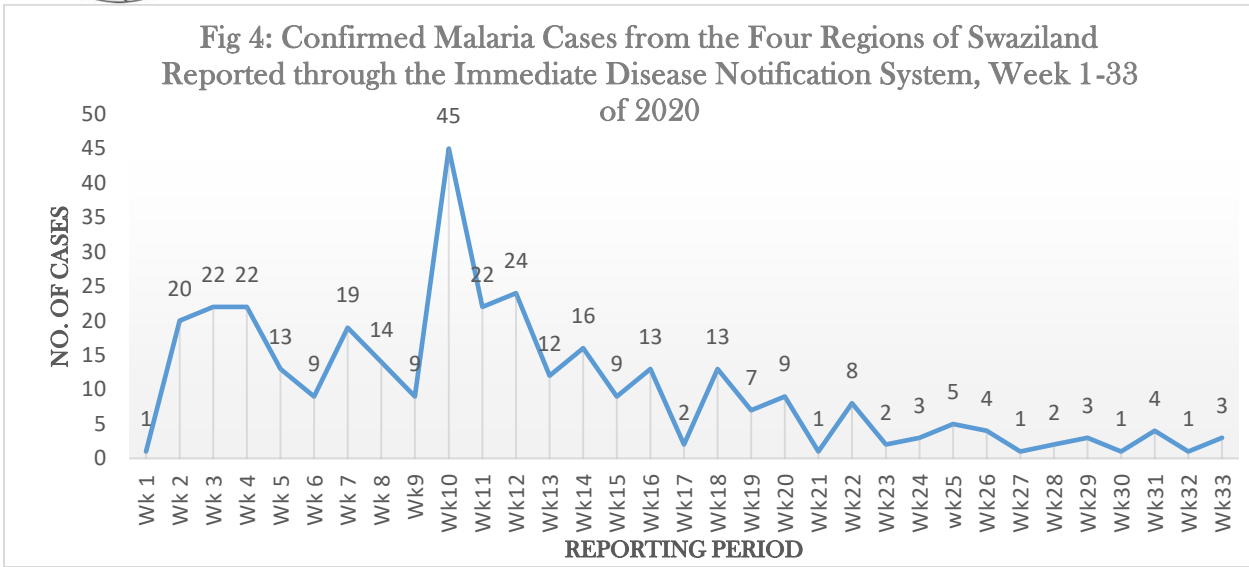
Table 4: Distribution of notifiable diseases between week 30 to week 33 of 2020 (IDNS data)

Notifiable Disease	Week 30 (20 to 26 July)					Week 31 (27 July to 02 August)					Week 32 (03 to 09 August)					Week 33 (10 to 16 August)				
	Hhohho	Lubombo	Manzini	Shiselweni	Total	Hhohho	Lubombo	Manzini	Shiselweni	Total	Hhohho	Lubombo	Manzini	Shiselweni	Total	Hhohho	Lubombo	Manzini	Shiselweni	Total
Malaria(Confirmed)	1	0	0	0	1	1	3	0	0	4	0	0	1	0	1	0	1	1	1	3
Maternal Death	0	0	0	0	0	2	0	1	0	3	0	0	0	0	0	0	0	0	0	0
Suspected Cholera	0	0	0	0	0	0	0	0	0	0	0	0	0	0	0	0	0	0	0	0
Suspected Measles	0	0	0	0	0	0	0	1	0	1	1	1	1	0	3	1	0	0	1	2
Suspected Severe Food Poisoning	0	0	0	0	0	0	0	0	0	0	0	0	0	0	0	0	0	0	0	0
Viral Hemorrhagic Fever/Ebola	0	0	0	0	0	0	0	0	0	0	0	0	0	0	0	0	0	0	0	0
Acute Flaccid Paralysis	0	1	0	0	1	0	0	0	0	0	0	0	0	0	0	0	0	0	0	0
Neonatal Tetanus	0	0	0	0	0	0	0	0	0	0	0	0	0	0	0	0	0	0	0	0
Suspected Human Rabies	0	0	0	0	0	0	0	0	0	0	0	0	0	0	0	0	0	0	0	0
COVID-19 (Confirmed)	213	10	165	24	412	278	50	202	37	567	185	42	214	20	461	219	30	295	59	603
Suspected Typhoid Fever	0	0	0	0	0	0	0	0	0	0	0	0	0	0	0	0	0	0	0	0
Suspected Meningococcal Meningitis	0	0	0	0	0	0	0	0	0	0	0	0	0	0	0	0	0	1	0	1
Perinatal Death	2	0	0	2	4	1	0	2	1	4	4	1	1	0	6	3	1	0	1	5
Suspected Yellow Fever	0	0	0	0	0	0	0	0	0	0	0	0	0	0	0	0	0	0	0	0
Suspected Rift Valley Fever	0	0	0	0	0	0	0	0	0	0	0	0	0	0	0	0	0	0	0	0
Total	216	11	165	26	418	282	53	206	38	579	190	44	217	20	471	223	32	297	62	614





Fig 4: Confirmed Malaria Cases from the Four Regions of Swaziland Reported through the Immediate Disease Notification System, Week 1-33 of 2020



5.0 Confirmed COVID-19 Cases from the four Regions

Fig 5 below shows the total number of confirmed COVID-19 cases reported from the four regions during week 33. Hhohho had the highest number of confirmed COVID-19 cases (n=202). The trend of these cases is shown in Fig 5 below,

Fig 5: Confirmed COVID-19 Cases From the four regions of Eswatini, Week 33

